

Bernardo 367 Side Table

Design Rodolfo Dordoni

Technical Information



BERNARDO coffee table is a precious accessory boasting a linear and discreet design. The characteristic Simplon white stone base, the powder coated stainless steel structure and the square top, make BERNARDO extremely stable and suitable for every space, both inside and outside the house.

TECHNICAL INFORMATION

DESCRIPTION

Side table for outdoor use.

STRUCTURE

Powder coated stainless steel stone base (Simplon white)

TOP

Powder coated steel or HPL

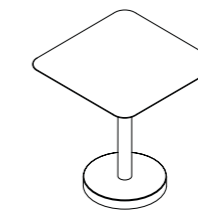
WEIGHT

Structure 15 kg

DIMENSION

L 50 × P 50 × H 67 cm

W 19" ⁵/₈ × D 19" ⁵/₈ × H 26" ³/₈



Materials

METAL



Smoke

Milk

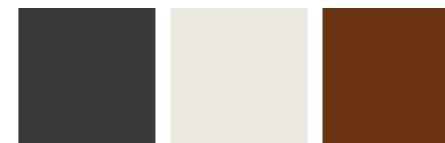
Rust

TOP / HPL



HPL grey

TOP / METAL

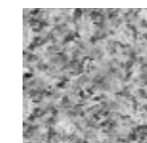


Smoke

Milk

Rust

BASE



Simplon white stone