

Network 149 Chair

Design Rodolfo Dordoni

Technical Information



The NETWORK outdoor sofas and accessories system bases its concept on a grid made of teak structure and polyester belts: the solidity of wood meets the cottony touch of the polyester belts, as the warp and the weft of a fabric, in an incessant game of empty and full spaces, softened by cushions. NETWORK the first collection signed by Rodolfo Dordoni for RODA, is not just a pleasant outdoor design collection, but a philosophy based on the belief that it is possible to enjoy the outdoors like a true and complete interior design project.

TECHNICAL INFORMATION

DESCRIPTION

Chair for outdoor use.

STRUCTURE

Teak.

BELTS

Polyester or acrylic (belt 45 mm).

SUPPORT

Polyester or acrylic belt fixed to the structure.

CUSHIONS

Standard or hydro draining.

WEIGHT

Structure	9 kg
Cushions (seat)	0,3 kg

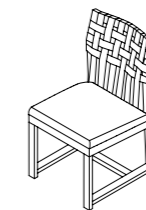
STORAGE COVER

Available.

DIMENSION

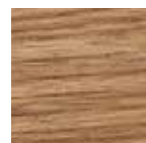
L 50 x P 55 x H 84cm
H seat 44 cm

W 19" ⁵/₈ x D 21" ⁵/₈ x H 33" ¹/₈
H seat 17" ³/₈



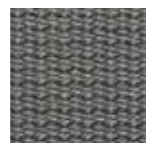
Materials

STRUCTURE

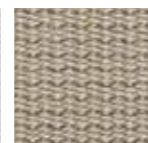


Teak

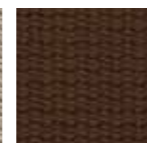
BELTS



Grey



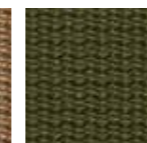
Sand



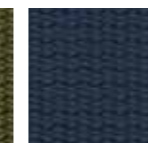
Brown



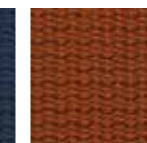
Tobacco



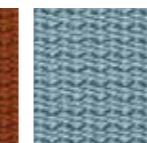
Olive



Blue

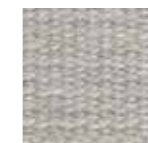


Orange

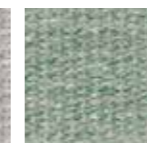


Sky

RECYCLED BELTS



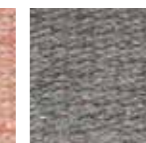
Clay



Mint



Rose



Stone



Teal