

# Network 149 Chair

Design Rodolfo Dordoni

Technical Information



The NETWORK outdoor sofas and accessories system bases its concept on a grid made of teak structure and polyester belts: the solidity of wood meets the cottony touch of the polyester belts, as the warp and the weft of a fabric, in an incessant game of empty and full spaces, softened by cushions. NETWORK the first collection signed by Rodolfo Dordoni for RODA, is not just a pleasant outdoor design collection, but a philosophy based on the belief that it is possible to enjoy the outdoors like a true and complete interior design project.

## TECHNICAL INFORMATION

**DESCRIPTION**  
Chair for outdoor use.

**STRUCTURE**  
Teak.

**BELTS**  
Polyester or acrylic (belt 45 mm).

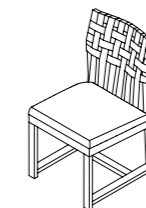
**SUPPORT**  
Polyester or acrylic belt fixed to the structure.

**CUSHIONS**  
Standard or hydro draining.

**WEIGHT**  
Structure 9 kg  
Cushions (seat) 0,3 kg

**STORAGE COVER**  
Available.

**DIMENSION**  
L 50 x P 58 x H 84cm  
H seat 44 cm  
W 19" <sup>5</sup>/<sub>8</sub> x D 22" <sup>7</sup>/<sub>8</sub> x H 33" <sup>1</sup>/<sub>8</sub>  
H seat 17" <sup>3</sup>/<sub>8</sub>



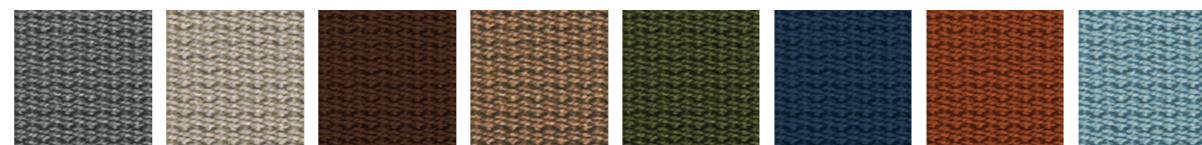
## Materials

### STRUCTURE



Teak

### BELTS



Grey

Sand

Brown

Tobacco

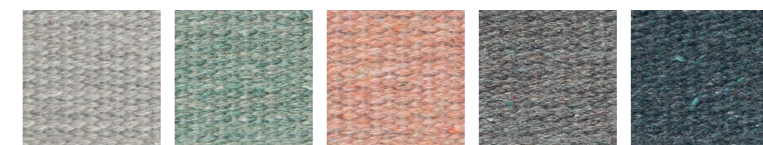
Olive

Blue

Orange

Sky

### RECYCLED BELTS



Clay

Mint

Rose

Stone

Teal