

# Network 151 Counter Height Stool

Design Rodolfo Dordoni

Technical Information



The NETWORK outdoor sofas and accessories system bases its concept on a grid made of teak structure and polyester belts: the solidity of wood meets the cottony touch of the polyester belts, as the warp and the weft of a fabric, in an incessant game of empty and full spaces, softened by cushions. NETWORK the first collection signed by Rodolfo Dordoni for RODA, is not just a pleasant outdoor design collection, but a philosophy based on the belief that it is possible to enjoy the outdoors like a true and complete interior design project.

## TECHNICAL INFORMATION

**DESCRIPTION**  
Counter height stool for outdoor use.

**STRUCTURE**  
Teak.

**BELTS**  
Polyester or acrylic (belt 45 mm).

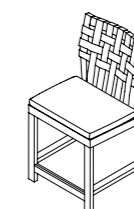
**SUPPORT**  
Polyester or acrylic belt fixed to the structure.

**CUSHIONS**  
Standard or hydro draining.

**WEIGHT**  
Structure 10 kg  
Cushions (seat) 0,3 kg

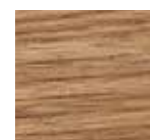
**STORAGE COVER**  
Available.

**DIMENSION**  
L 50 x P 46 x H 92cm  
H seat 55 cm  
W 19" <sup>5</sup>/<sub>8</sub> x D 18" <sup>1</sup>/<sub>8</sub> x H 36" <sup>1</sup>/<sub>4</sub>  
H seat 21" <sup>5</sup>/<sub>8</sub> cm



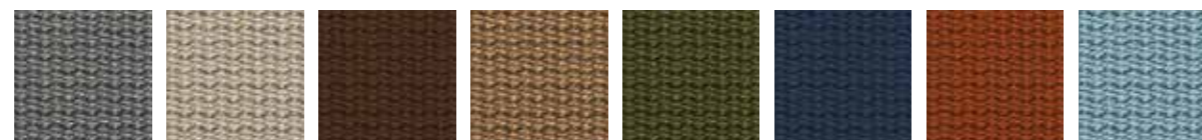
## Materials

### STRUCTURE



Teak

### BELTS



Grey Sand Brown Tobacco Olive Blue Orange Sky

### RECYCLED BELTS



Clay Mint Rose Stone Teal