

Network 168 Lounge Chair

Design Rodolfo Dordoni

Technical Information



The NETWORK outdoor sofas and accessories system bases its concept on a grid made of teak structure and polyester belts: the solidity of wood meets the cottony touch of the polyester belts, as the warp and the weft of a fabric, in an incessant game of empty and full spaces, softened by cushions. NETWORK the first collection signed by Rodolfo Dordoni for RODA, is not just a pleasant outdoor design collection, but a philosophy based on the belief that it is possible to enjoy the outdoors like a true and complete interior design project.

TECHNICAL INFORMATION

DESCRIPTION
Lounge chair for outdoor use.

STRUCTURE
Teak.

BELTS
Polyester or acrylic (belt 45 mm).

SUPPORT
Polyester or acrylic belt fixed to the structure.

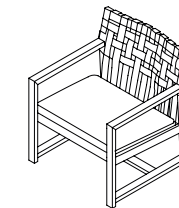
CUSHIONS
Standard or hydro draining.

WEIGHT
Structure 11 kg
Cushions (seat) 0, 3 kg

STORAGE COVER
Available.

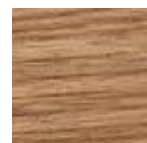
DIMENSION
L 68 x P 66 x H 76cm
H seat 34 cm

W 27" ¹/₈ x D 26" x H 29" ⁷/₈
H seat 13" ³/₈



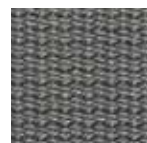
Materials

STRUCTURE

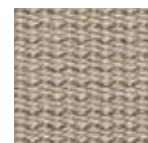


Teak

BELTS



Grey



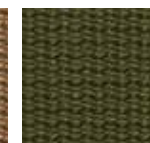
Sand



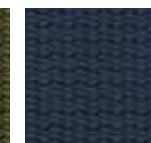
Brown



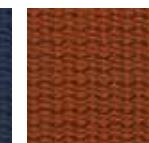
Tobacco



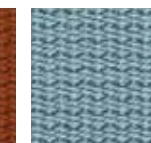
Olive



Blue



Orange

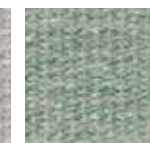


Sky

RECYCLED BELTS



Clay



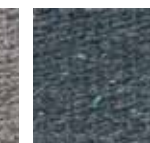
Mint



Rose



Stone



Teal