

Norma 002 Sink Module

Design Rodolfo Dordoni

Technical Information



NORMA is the new outdoor kitchen designed by Rodolfo Dordoni. An innovative product for RODA, a new revealing experience in the world of cooking. The collection includes a module with a sink, one with a hob and one with a barbecue, available with fixed feet or castors. To these three modules, an island can be added that attaches to the sink module to provide an extension of the work space or a dining area where one can sit like at a counter. On request, the space below can include a fridge. The collection is further enhanced with optional stainless-steel griddles, larch wood chopping boards, and a custom-fit protective cover for the hob and barbecue, designed to fit perfectly into the space under the island.

TECHNICAL INFORMATION

DESCRIPTION

Container kitchen module with sink.

STRUCTURE

Powder coated stainless steel.

SINK

Stainless steel.

MIXER

Powder coated stainless steel.

TOP

Sintered stone (Lapitec®)

WEIGHT

Structure 122 kg

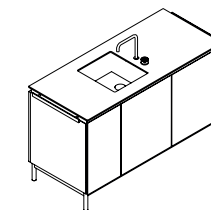
STORAGE COVER

Available.

DIMENSION

L 166 × P 70 × H 95 (with sink 121) cm

W 62" ½ × D 27" ½ × H 37" ¾ (with sink 47" ½)



Materials

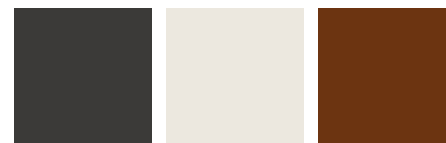
STRUCTURE



Metal
Smoke

Lapitec®

DOORS / METAL

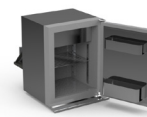


Smoke

Milk

Rust

ACCESSORIES



NORMA 011 / refrigerator



NORMA 013 / tray - cutting board
(larch 5 × 74 × 40 cm)