

# Orson 002 Director Lounge Chair (foldable)

Design Gordon Guillaumier

Technical Information



The perfect combination of classic teak garden furniture with a contemporary shape: here is ORSON, a collection of outdoor chairs, lounge chairs and a lounger, characterized by harmonious and sinuous lines and by skilful woodworking. From the foldable director's chairs, dressed with Batyline fabric that seem to wear an evening dress, to the sunlounger in teak designed to ensure an ergonomic and comfortable support in perfect balance between material, shape and color, ORSON is the synthesis of a chic outdoor furniture, with a "bourgeois" appeal.

## TECHNICAL INFORMATION

**DESCRIPTION**  
Director lounge chair for outdoor use.

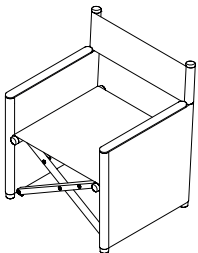
**STRUCTURE**  
Teak.

**NET**  
Batyline.

**WEIGHT**  
Structure 8 kg

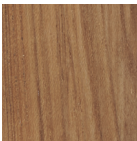
**STORAGE COVER**  
Available.

**DIMENSION**  
L66 × P 60 × H 78 cm  
H seat 37 cm  
W 25"× D 23" <sup>5</sup>/<sub>8</sub> × H 30" <sup>3</sup>/<sub>4</sub>  
H seat 14" <sup>5</sup>/<sub>8</sub>



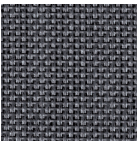
## Materials

## STRUCTURE

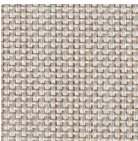


Teak

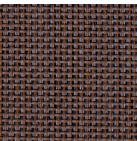
## BATYLINE



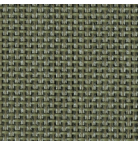
Grey



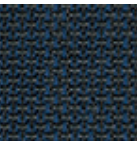
Sand



Brown



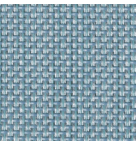
Olive



Navy



Ginger



Sky