

Pillow 001 Lantern

Design Gordon Guillaumier

Technical Information



A mesh enclosure, light and almost transparent, that captures the light emitted by a slim base in teak wood: simple elements making up PILLOW, the outdoor light designed to be hung from a tree branch or rested on the ground, to illuminate the environment with its light, more intense or softer, to be managed as needed.

TECHNICAL INFORMATION

DESCRIPTION

Lantern for outdoor use.

STRUCTURE

Teak.

NET

Canatex.

WEIGHT

Structure 5 kg

STORAGE COVER

Not available.

DIMENSION

L 47 × P 23 × H 54 cm

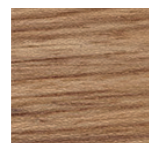
W 18" ½ × D 9" ⅛ × H 21" ¼



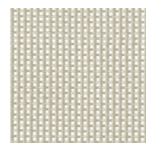
Materials

STRUCTURE

NET



Teak



Sand