

Piper 011 Coffee Table

Design Rodolfo Dordoni

Technical Information



The PIPER is a vast collection for exclusive outdoor furniture. Its many elements furnish every instant of outdoor living. There is the conviviality of sofas for many guests; the privileged relaxation of a sun lounger; the practicality of a tabletop perched on a precious frame. The materials are loyal mainstays: painted aluminium, robust belts and Batyline. The comfort offered by the outdoor sofa system and the generously sized sun loungers expands to the dining area: the extendable outdoor table combines a wide variety of stackable dining chairs and armchairs available in a wide range of different materials and colors, including teak wood for the structures. Padded belts are available for certain models of chairs.

TECHNICAL INFORMATION

DESCRIPTION

Coffee table for outdoor use.

STRUCTURE

Powder coated aluminium.

TOP

Teak, stones or gres grey.

WEIGHT

Structure + gres top	24 kg
Structure + teak top	13 kg
Structure + stone top	38 kg

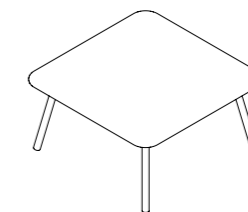
STORAGE COVER

Available.

DIMENSION

L 80 × P 80 × H 40 cm

W 31" ½ × D 31" ½ × H 16"



Materials

METAL



Smoke

Milk

Rust

TOP / GRES



Grey

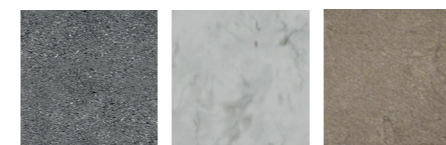
TOP / TEAK



Teak

WR Teak

TOP / STONE



Luna stone

Carrara
marble

Farsena