

Piper 013 Coffee Table

Design Rodolfo Dordoni

Technical Information



The PIPER is a vast collection for exclusive outdoor furniture. Its many elements furnish every instant of outdoor living. There is the conviviality of sofas for many guests; the privileged relaxation of a sun lounger; the practicality of a tabletop perched on a precious frame. The materials are loyal mainstays: painted aluminium, robust belts and Batyline. The comfort offered by the outdoor sofa system and the generously sized sun loungers expands to the dining area: the extendable outdoor table combines a wide variety of stackable dining chairs and armchairs available in a wide range of different materials and colors, including teak wood for the structures. Padded belts are available for certain models of chairs.

TECHNICAL INFORMATION

DESCRIPTION

Coffee table for outdoor use.

STRUCTURE

Powder coated aluminium.

TOP

Teak, stones, glazed gres or gres grey.

WEIGHT

Structure + gres top	11 kg
Structure + teak/WR top	6 kg
Structure + stone/glazed gres top	17 kg

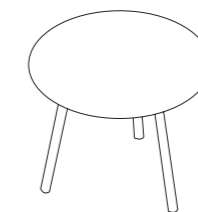
STORAGE COVER

Available.

DIMENSION

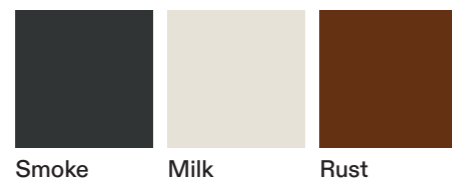
Ø67 × P 60 × H 62 cm

W 26" ³/₈ × D 23" ⁵/₈ × H 24" ¹/₂



Materials

METAL

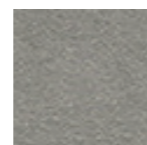


Smoke

Milk

Rust

TOP / GRES



Grey

TOP / TEAK



Teak

WR Teak

TOP / STONE

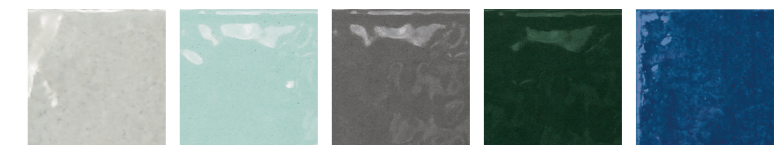


Luna stone

Carrara
marble

Farsena

TOP / GLAZED GRES



Ice

Water

Storm

Forest

Sapphire