

# Piper 013 Coffee Table

Design Rodolfo Dordoni

Technical Information



The PIPER is a vast collection for exclusive outdoor furniture. Its many elements furnish every instant of outdoor living. There is the conviviality of sofas for many guests; the privileged relaxation of a sun lounger; the practicality of a tabletop perched on a precious frame. The materials are loyal mainstays: painted aluminium, robust belts and Batyline. The comfort offered by the outdoor sofa system and the generously sized sun loungers expands to the dining area: the extendable outdoor table combines a wide variety of stackable dining chairs and armchairs available in a wide range of different materials and colors, including teak wood for the structures. Padded belts are available for certain models of chairs.

## TECHNICAL INFORMATION

### DESCRIPTION

Coffee table for outdoor use.

### STRUCTURE

Powder coated aluminium.

### TOP

Teak, stones, glazed gres or gres grey.

### WEIGHT

Structure + gres top	11 kg
Structure + teak/WR top	6 kg
Structure + stone/glazed gres top	17 kg

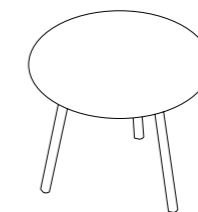
### STORAGE COVER

Available.

### DIMENSION

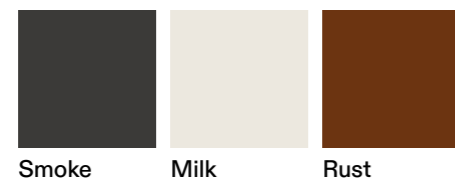
Ø67 × P 60 × H 53 cm

W 26" <sup>3</sup>/<sub>8</sub> × D 23" <sup>5</sup>/<sub>8</sub> × H 20" <sup>7</sup>/<sub>8</sub>



## Materials

### METAL



Smoke

Milk

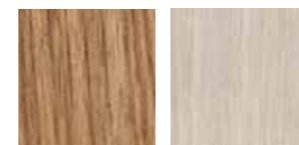
Rust

### TOP / GRES



Grey

### TOP / TEAK



Teak

WR Teak

### TOP / STONE

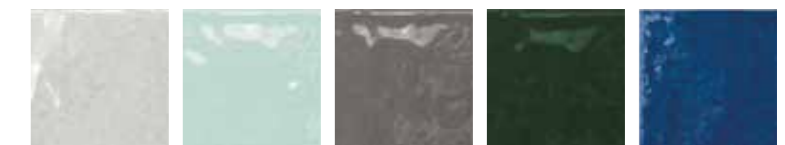


Luna stone

Carrara  
marble

Farsena

### TOP / GLAZED GRES



Ice

Water

Storm

Forest

Sapphire