

Piper 030 Extendable Table

Design Rodolfo Dordoni

Technical Information



The PIPER is a vast collection for exclusive outdoor furniture. Its many elements furnish every instant of outdoor living. There is the conviviality of sofas for many guests; the privileged relaxation of a sun lounger; the practicality of a tabletop perched on a precious frame. The materials are loyal mainstays: painted aluminium, robust belts and Batyline. The comfort offered by the outdoor sofa system and the generously sized sun loungers expands to the dining area: the extendable outdoor table combines a wide variety of stackable dining chairs and armchairs available in a wide range of different materials and colors, including teak wood for the structures. Padded belts are available for certain models of chairs.

TECHNICAL INFORMATION

DESCRIPTION

Extendable dining table for outdoor use.

STRUCTURE AND LEGS

Powder coated stainless steel.

TOP

Sintered stone

WEIGHT

Structure 134 kg

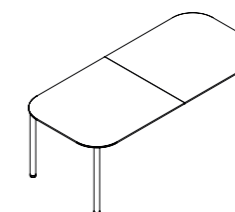
STORAGE COVER

Available.

DIMENSION

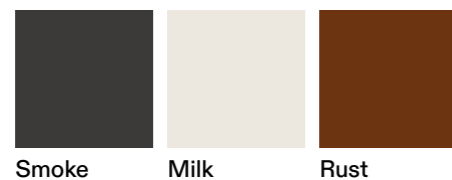
L 220 (open 320) × P 100 × H 75 cm

W 86" ¾ (open 125" ¾) × D 39" ¼ × H 29" ½



Materials

METAL

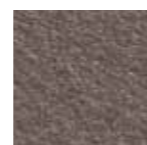


Smoke

Milk

Rust

TOP



Lapitec®