

Piper Sofa Collection

Design Rodolfo Dordoni

Technical Information



The PIPER is a vast collection for exclusive outdoor furniture. Its many elements furnish every instant of outdoor living. There is the conviviality of sofas for many guests; the privileged relaxation of a sun lounger; the practicality of a tabletop perched on a precious frame. The materials are loyal mainstays: painted aluminium, robust belts and Batyline. The comfort offered by the outdoor sofa system and the generously sized sun loungers expands to the dining area: the extendable outdoor table combines a wide variety of stackable dining chairs and armchairs available in a wide range of different materials and colors, including teak wood for the structures. Padded belts are available for certain models of chairs.

TECHNICAL INFORMATION

DESCRIPTION

Sofa for outdoor use.

STRUCTURE

Powder coated aluminium.

BACKREST

Batyline.

CUSHIONS

Standard or hydro draining.

STORAGE COVER

Available.

Materials

METAL

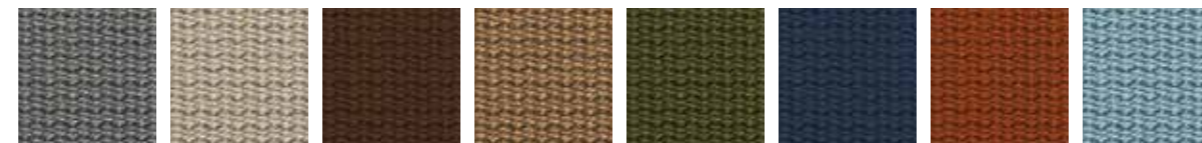


Smoke

Milk

Rust

BELTS



Grey

Sand

Brown

Tobacco

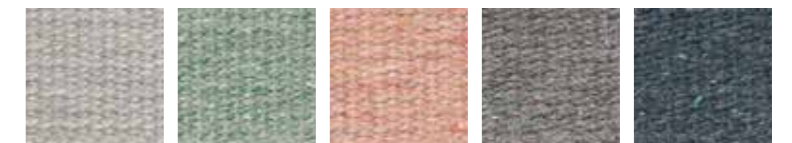
Olive

Blue

Orange

Sky

RECYCLED BELTS



Clay

Mint

Rose

Stone

Teal

Piper Sofa Suggested Composition

Design Rodolfo Dordoni

Technical Information

PIPER

MAIN SUGGESTED COMPOSITION

101 SOFA

W 119 x D 97 x H 69 cm
Seat H with cushion 28 + 13 cm

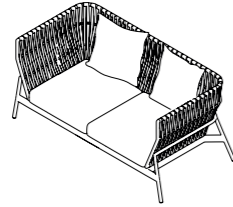
W 46" 3/4 x D 38" 1/4 x H 27"
Seat H with cushion 11" + 5" 1/4



102 SOFA

W 194 x D 97 x H 69 cm
Seat H with cushion 28 + 13 cm

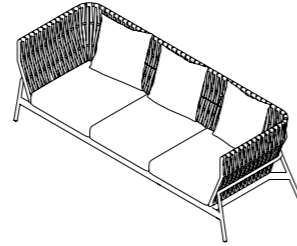
W 76" 1/2 x D 38" 1/4 x H 27"
Seat H with cushion 11" + 5" 1/4



103 SOFA

W 269 x D 97 x H 69 cm
Seat H with cushion 28 + 13 cm

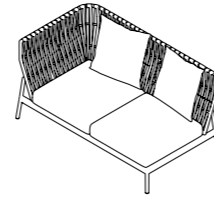
W 105" 3/4 x D 38" 1/4 x H 27"
Seat H with cushion 11" + 5" 1/4



104 MODULE RIGHT

W 174 x D 97 x H 69 cm
Seat H with cushion 28 + 13 cm

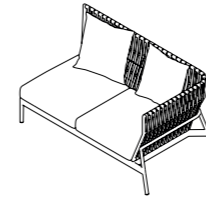
W 68" 1/2 x D 38" 1/4 x H 27"
Seat H with cushion 11" + 5" 1/4



105 MODULE LEFT

W 174 x D 97 x H 69 cm
Seat H with cushion 28 + 13 cm

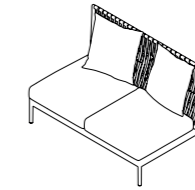
W 68" 1/2 x D 38" 1/4 x H 27"
Seat H with cushion 11" + 5" 1/4



106 MODULE CENTRAL

W 150 x D 97 x H 69 cm
Seat H with cushion 28 + 13 cm

W 59" 1/4 x D 38" 1/4 x H 27"
Seat H with cushion 11" + 5" 1/4



Piper Sofa Suggested Composition

Design Rodolfo Dordoni

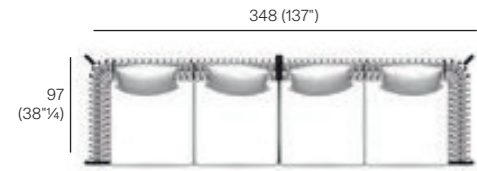
Technical Information

PIPER

MAIN SUGGESTED COMPOSITION

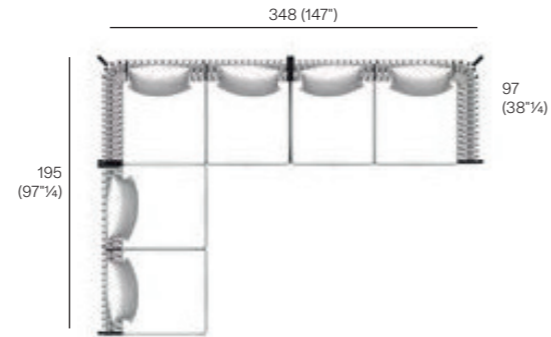
PIPER SOFA COMPOSITION

1 x PIPER 104 module right (174×97 cm) 1 x
cushion PIPER 2 seater kit 4 pcs
1 x PIPER 105 module left (174×97 cm) 1 x
cushion PIPER 2 seater kit 4 pcs



PIPER SOFA COMPOSITION

1 x PIPER 104 module right (174×97 cm) 1 x
cushion PIPER 2 seater kit 4 pcs
1 x PIPER 105 module left (174×97 cm)
1 x cushion PIPER 2 seater kit 4 pcs
1 x PIPER 106 module central (150×97 cm) 1 x
cushion PIPER 2 seater kit 4 pcs



EDEN SOFA COMPOSITION

1 x PIPER 104 module right (174×97 cm) 1 x
cushion PIPER 2 seater kit 4 pcs
1 x PIPER 105 module left (174×97 cm)
1 x cushion PIPER 2 seater kit 4 pcs
1 x PIPER 106 module central (150×97 cm) 1 x
cushion PIPER 2 seater kit 4 pcs

