

Road 226 Coffee Table

Design Rodolfo Dordoni

Technical Information



ROAD is a collection of outdoors sofas, developed on the idea of realizing some products whose seats are made from a stretched canatex net anchored to a "clean" structure, with an essential but very comfortable shape. This is constituted by solid teak fillets, among which the vertical uppercuts, with a circular section, which strongly characterize the project, stand out as they were sticks. For an essential and comfortable outdoor furniture, inspired by the Scandinavian design from the 50s and 60s.

TECHNICAL INFORMATION

DESCRIPTION
Coffee table for outdoor use.

STRUCTURE
Teak.

TOP
Stone or HPL grey.

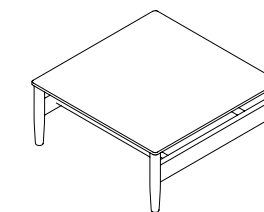
WEIGHT

Structure + HPL top	29 kg
Structure + Stone top	35 kg

STORAGE COVER
Available.

DIMENSION

L 92 × P 77 × H 33 cm
W 36" ¼ × D 30" ¼ × H 13"



Materials

STRUCTURE



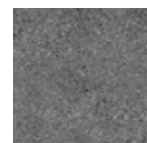
Teak

TOP



HPL grey

TOP / STONE



Luna stone



Carrara
marble



Farsena