

# Root o45 Side Table

Design Rodolfo Dordoni

Technical Information



In perfect balance between solidity and lightness, ROOT is an extremely versatile outdoor furniture proposal, both in the side table and in the dining table version. It is as elegant as simple, easy to combine with any outdoor chair or lounge chair, creating an intimate and romantic corner for an intimate dinner or an informal coffee with friends.

TECHNICAL INFORMATION

DESCRIPTION  
Side table for outdoor use.

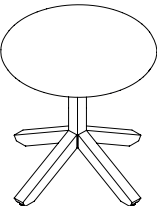
STRUCTURE  
Teak.

TOP  
Gres natural, stone or glazed gres.

WEIGHT  
Structure + gres top 9 kg  
Structure + Stone/glazed gres top 13 kg

STORAGE COVER  
Not available.

DIMENSION  
Ø45 × H 44 cm  
Ø 17" ¾ × H 17" ¾



Materials

STRUCTURE



Teak

TOP / GRES

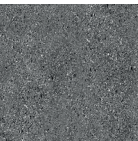


Natural

TOP / STONE



Carrara  
marble

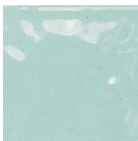


Luna stone

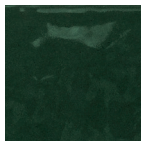


Farsena

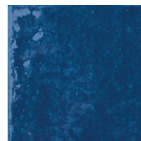
TOP / GLAZED GRES



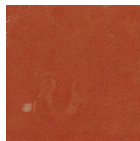
Water



Forest



Sapphire



Brick