

Root o46 Side Table

Design Rodolfo Dordoni

Technical Information



In perfect balance between solidity and lightness, ROOT is an extremely versatile outdoor furniture proposal, both in the side table and in the dining table version. It is as elegant as simple, easy to combine with any outdoor chair or lounge chair, creating an intimate and romantic corner for an intimate dinner or an informal coffee with friends.

TECHNICAL INFORMATION

DESCRIPTION
Side table for outdoor use.

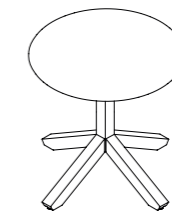
STRUCTURE
Teak.

TOP
HPL grey, stone or glazed gres.

WEIGHT
Structure + HPL top 11 kg
Structure + Stone/gres top 22 kg

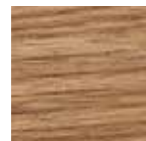
STORAGE COVER
Not available.

DIMENSION
Ø67 × H 44 cm
Ø26" ³/₈ × H 17" ³/₈



Materials

STRUCTURE



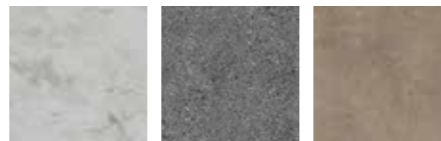
Teak

TOP / HPL



HPL grey

TOP / STONE

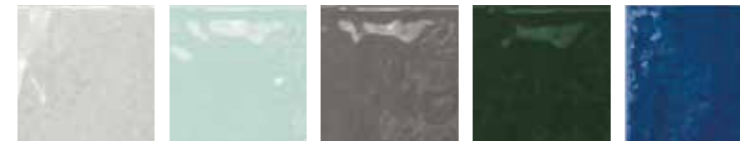


Carrara marble

Luna stone

Farsena

TOP / GLAZED GRES



Ice

Water

Storm

Forest

Sapphire