

Root o46 Coffee Table

Design Rodolfo Dordoni

Technical Information



In perfect balance between solidity and lightness, ROOT is an extremely versatile outdoor furniture proposal, both in the side table and in the dining table version. It is as elegant as simple, easy to combine with any outdoor chair or lounge chair, creating an intimate and romantic corner for an intimate dinner or an informal coffee with friends.

TECHNICAL INFORMATION

DESCRIPTION
Coffee table for outdoor use.

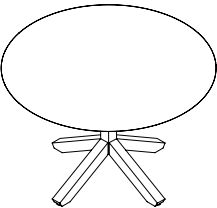
STRUCTURE
Teak.

TOP
Gres natural, stone or glazed gres.

WEIGHT
Structure + gres top 15 kg
Structure + Stone/glazed gres top 22 kg

STORAGE COVER
Not available.

DIMENSION
Ø67 × H 44 cm
Ø26" ³/₈ × H 17" ³/₈



Materials

STRUCTURE



Teak

TOP / GRES

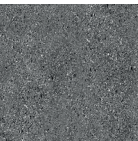


Natural

TOP / STONE



Carrara
marble



Luna stone

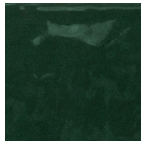


Farsena

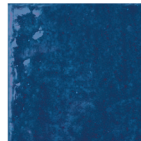
TOP / GLAZED GRES



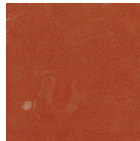
Water



Forest



Sapphire



Brick