

Root 067 Side Table

Design Rodolfo Dordoni

Technical Information



In perfect balance between solidity and lightness, ROOT is an extremely versatile outdoor furniture proposal, both in the side table and in the dining table version. It is as elegant as simple, easy to combine with any outdoor chair or lounge chair, creating an intimate and romantic corner for an intimate dinner or an informal coffee with friends.

TECHNICAL INFORMATION

DESCRIPTION
Side table for outdoor use.

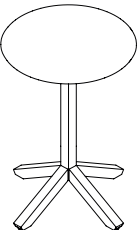
STRUCTURE
Teak.

TOP
Stone, gres, glazed gres or concrete.

WEIGHT
Structure + gres top 12 kg
Structure + stone/glazed gres top 15 kg
Structure + concrete top 11 kg

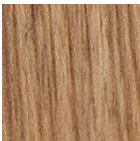
STORAGE COVER
Not available.

DIMENSION
Ø45 × H 44 cm
Ø17" ¾ × H 17" ⅜



Materials

STRUCTURE



Teak

TOP / GRES

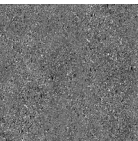


Natural

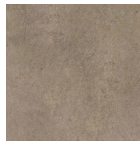
TOP / STONE



Carrara
marble

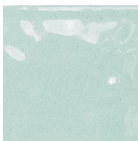


Luna stone

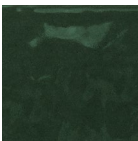


Farsena

TOP / GLAZED GRES



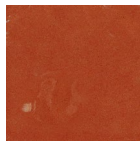
Water



Forest



Sapphire



Brick

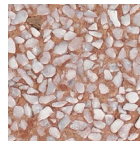
TOP / CONCRETE



Mole



Green



Orange