

Teka 171 Chair (stackable)

Design Gordon Guillaumier

Technical Information



TEKA spotlights all the expressive force of teak, a wood whose high value is equally matched by its malleability, in a complete collection of outdoor sofas and low tables, dining tables and chairs. Designed by Gordon Guillaumier, TEKA is developed around a particular prism-shaped geometric construction of great impact which, at the same time, confers a sensation of lightness to the product, while retaining its intrinsic durability. The tops of the outdoor tables are in stoneware slates, with elegant opaque natural tones or vibrant glossy colours.

TECHNICAL INFORMATION

DESCRIPTION
Chair for outdoor use.

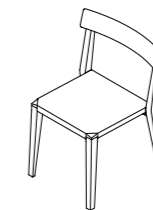
STRUCTURE
Teak.
Batyline.

WEIGHT
Structure 9 kg

STORAGE COVER
Available for 4 stacked chairs.

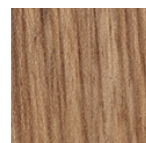
DIMENSION
L 54 x P 52 x H 80 cm
H seat 46 cm

W 21" ¹/₄ x D 20" ¹/₂ x H 31" ¹/₂
H seat 18" ¹/₄



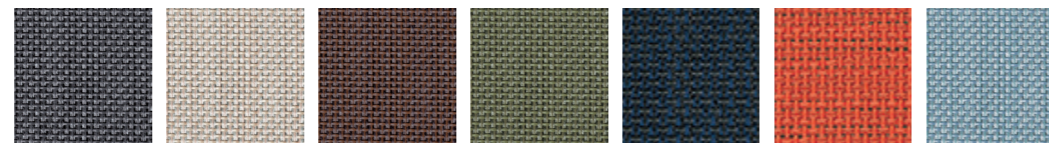
Materials

STRUCTURE



Teak

BATYLINE



Grey

Sand

Brown

Olive

Navy

Ginger

Sky