

# Teka 171 Chair (stackable)

Design Gordon Guillaumier

Technical Information



TEKA spotlights all the expressive force of teak, a wood whose high value is equally matched by its malleability, in a complete collection of outdoor sofas and low tables, dining tables and chairs. Designed by Gordon Guillaumier, TEKA is developed around a particular prism-shaped geometric construction of great impact which, at the same time, confers a sensation of lightness to the product, while retaining its intrinsic durability. The tops of the outdoor tables are in stoneware slates, with elegant opaque natural tones or vibrant glossy colours.

## TECHNICAL INFORMATION

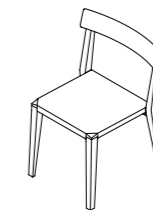
**DESCRIPTION**  
Chair for outdoor use.

**STRUCTURE**  
Teak.  
Batyline.

**WEIGHT**  
Structure 8 kg

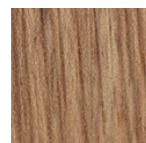
**STORAGE COVER**  
Available for 4 stacked chairs.

**DIMENSION**  
L 54 x P 52 x H 80 cm  
H seat 46 cm  
W 21" ¼ x D 20" ½ x H 31" ½  
H seat 18" ¼



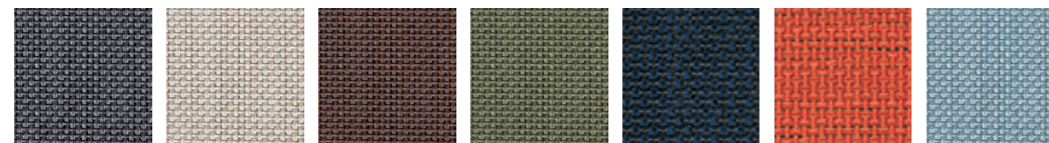
## Materials

### STRUCTURE



Teak

### BATYLINE



Grey

Sand

Brown

Olive

Navy

Ginger

Sky