

Thea 001 Sofa

Design Adam David Tihany

Technical Information



Garden sofas and lounge chairs inspired by the shapes of nature, drawn by sinuous and enveloping lines, where the curves of metal welcome soft cushions for a unique comfort.

Outdoor furniture designed for luxury hotels and ships, but which can also be easily placed in the patio of the house. Pure elegance, to live and to share in outdoor spaces, recovering the authentic relationship with nature in a unique union between environment and product.

TECHNICAL INFORMATION

DESCRIPTION
Sofa for outdoor use.

STRUCTURE
Powder coated aluminium.

CUSHIONS
Standard or hydro draining.

WEIGHT

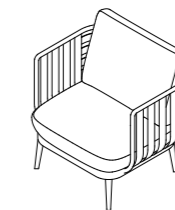
| | |
|-----------------|---------|
| Structure | 9 kg |
| Cushions (seat) | 6, 5 kg |
| Cushions (back) | 2 kg |

STORAGE COVER
Available.

DIMENSION

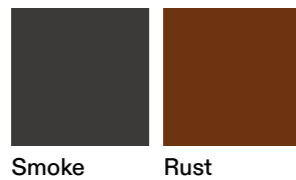
L 83 × P 80 × H 72 cm
H seat 38 cm

W 32" ²/₃ × D 31" ¹/₂ × H 28" ³/₄
H seat 15"



Materials

METAL



Smoke

Rust